

## TOWN AND COUNTRY PLANNING ACT 1990

### THE LAND AT 2 CONISBOROUGH CLOSE, BURLEY IN WHARFEDALE

#### TREE PRESERVATION ORDER 2020

The City of Bradford Metropolitan District Council in exercise of the powers conferred on them by Section 198 of the Town and Country Planning Act 1990 make the following Order:-

#### Citation

1. This Order may be cited as land at 2 Conisborough Close, Burley in Wharfedale.

#### Interpretation

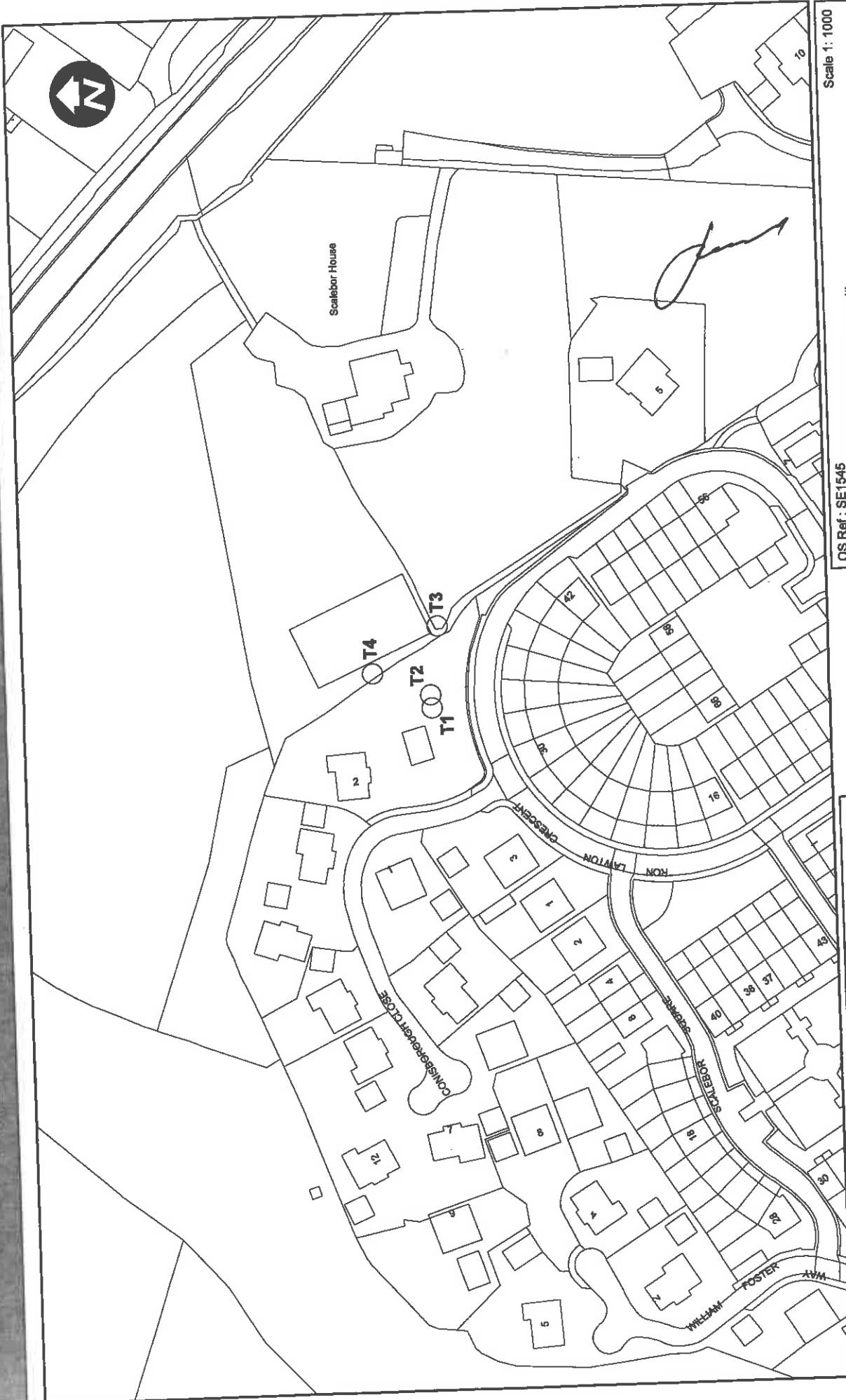
2. (1) In this Order "the authority" means City of Bradford Metropolitan District Council.
- (2) In this Order any reference to a numbered section is a reference to the section so numbered in the Town and Country Planning Act 1990 and any reference to a numbered regulation is a reference to the regulation so numbered in the Town and Country Planning Act (Tree Preservation) (England) Regulations 2012.

#### Effect

3. (1) Subject to article 4, this Order takes effect provisionally on the date on which it is made.
- (2) Without prejudice to subsection (7) of section 198 (power to make tree preservation orders) or subsection (1) of section 200 (tree preservation orders: Forestry Commissioners) and, subject to the exception in regulation 14, no person shall:-
  - (a) cut down, top, lop, uproot, wilfully damage, or wilfully destroy; or
  - (b) cause or permit the cutting down, topping, lopping, wilful damage or wilful destruction of,

any tree specified in the Schedule to this Order except with the written consent of the authority in accordance with regulations 16 and 17, or of the Secretary of State in accordance with regulation

LAND AT 2 CONISBOROUGH CLOSE, BURLEY IN WHARFEDALE



Scale 1: 1000

OS Ref : SE1545  
Reproduced from the Ordnance Survey map with  
the sanction of HM Stationary Office  
Crown Copyright reserved  
LA076120

DEPARTMENT OF PLACE  
Argus Chambers  
Bradford  
BD1 1HX

20/00008/1  
LAND AT 2 CONISBOROUGH CLOSE  
BURLEY IN WHARFEDALE



**DECISION NOT TO CONFIRM**

A decision not to confirm this Order was taken by the City of Bradford Metropolitan District Council on the                      day of                     

**EXECUTED AS A DEED** by affixing  
**THE COMMON SEAL** of **THE CITY**  
**OF BRADFORD METROPOLITAN**  
**DISTRICT COUNCIL** in the presence of:-

Authorised by the City Solicitor

**VARIATION OF ORDER**

This Order was varied by the City of Bradford Metropolitan District Council on the                      day of                      by a variation order under reference  
number                      a copy of which is attached.

**EXECUTED AS A DEED** by affixing  
**THE COMMON SEAL** of **THE CITY**  
**OF BRADFORD METROPOLITAN**  
**DISTRICT COUNCIL** in the presence of:-

Authorised by the City Solicitor

**REVOCATION OF ORDER**

This Order was revoked by the City of Bradford Metropolitan District Council on the            day of

**EXECUTED AS A DEED** by affixing  
**THE COMMON SEAL** of **THE CITY**  
**OF BRADFORD METROPOLITAN**  
**DISTRICT COUNCIL** in the presence of:-

Authorised by the City Solicitor

## SCHEDULE

### Specification of Trees

#### Trees specified individually

(encircled in black on the map)

Reference on map	Description	Situation
T1	HAWTHORN	415968, 445948
T2	CHERRY	415971, 445948
T3	SYCAMORE	415991, 445946
T4	SCOTS PINE	415978, 445964

#### Trees specified by reference to an area

(within a dotted black line on the map)

Reference on map	Description	Situation
None		

#### Groups of trees

(within a broken black line on the map)

Reference on map	Description	Situation
None		

#### Woodlands

(within a continuous black line on the map)

Reference on map	Description	Situation
None		